

Children's Speech and Language Therapy

Single Point of Referral



who?

Who we are?

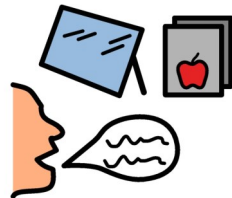
We are the Children's Speech & Language Therapy Team who provide support for children and young people within the Royal Borough of Kingston.

Who we work with?

We work with children and young people with speech, language and communication needs up to the point they leave full time education.

This may include children who have:

- Difficulties with saying sounds
- Difficulty understanding spoken language
- Difficulty using spoken language
- Difficulty interacting and participating in a conversation with others
- Difficulties with biting, sucking, chewing and/or swallowing foods and drinks



how?

How to refer

To make a referral you can:

- Contact us to discuss a referral directly by email SLTChildren@yourhealthcare.org or call on **020 8274 7814**
- Discuss with your Child's nursery/school SENCo about a referral to the Children's SLT service
- Contact your GP.